

THE  
**MONTPELIER**  
 AND  
**CLIFTON HILL**  
 ASSOCIATION

Conserving this historic area



OAKHURST COTTAGE

**SPRING OUTING SUNDAY 10<sup>TH</sup> MAY 2009**  
**OAKHURST COTTAGE AND WINKWORTH ARBORETUM**

The spring outing is to see 2 National Trust properties near Godalming in Surrey. In the morning we will see **Oakhurst Cottage** at Hambledon. This is a small 16<sup>th</sup> century timber-framed cottage, restored and furnished as a labourer's simple dwelling. The cottage contains fascinating artefacts reflecting four centuries of continual occupation. The delightful gardens contain typical Victorian plants. A guided tour will be given by the NT staff.

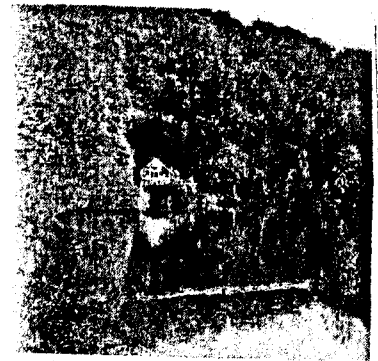
For lunch we shall visit the Crown Inn at Chiddingfold, one of the oldest and famous pubs in England, which used to be part of a monastery and was visited by Edward VI and Elizabeth I.

In the afternoon we shall go to **Winkworth Arboretum**, a tranquil hillside woodland with sweeping views. Established in the 20<sup>th</sup> century it now contains more than 1000 different shrubs and trees, many of them rare. The most impressive displays are in the spring, with magnolias, bluebells and azaleas, and in the autumn, when the colour of the foliage is stunning. There are 2 lakes to see and explore. A guided tour will be given by the NT staff.

Our tour guide **Michael Robins** will accompany the outing.

To **MARTIN FOSTER**, 11, Victoria Street, Brighton, Sussex BN1 3FP (01273 729998) by no latter than **Monday 27<sup>th</sup> April**. Please make cheques payable to Martin Foster. Costs include Coach and Entrance fees.

	No	NON NT	No	NT
		MEMBERS		MEMBERS
		£31.25		£21.50
		TOTAL INC.		£



WINKWORTH ARBORETUM

**Name**.....**Tel No**.....

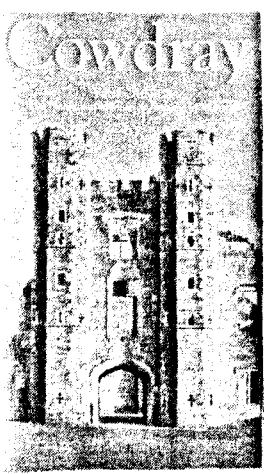
**Address**.....

**Pick up point(Please Tick):-** BramptonRoad8.15AM( ) SussexGdns9.00AM( )  
 PowisSquare9.15AM( ) HoveTownHall9.30AM( )

**Pub lunch required** Yes( ) No( )

**Name of Member's Society**.....





**SUMMER OUTING SUNDAY 5<sup>TH</sup> JULY 2009**  
**COWDRAY HOUSE AND HISTORIC MIDHURST**

The summer outing is to see **Cowdray House** and a walk around **Historic Midhurst**. In the morning we visit **Cowdray House** at Midhurst. This is one of Southern England's most important early Tudor courtiers houses, visited by King Henry VIII and Queen Elizabeth I. Partly destroyed by fire in 1793, its magnificent ruins are set in the stunning landscaped grounds of Cowdray Park. It has just received £3M of lottery money for its conservation and is one of the most important restoration projects undertaken in recent times. It was home to the Viscounts Montague, who were prominent Catholics and their connections with Guy Fawkes, who was employed within the household, resulted in a heavy fine and 40 weeks' imprisonment in the Tower of London for the 2<sup>nd</sup> Viscount. In the 18<sup>th</sup> century the Park was landscaped by Capability Brown. During the civil war the House was sequestrated by the Parliamentarians and converted into a barrack for the Roundheads. In the same year as the fire the 8<sup>th</sup> Viscount was drowned in the Rhine and the last 2 sons of the Montague dynasty were drowned in a boating accident in 1815. These tragedies were said to be result of the fabled fulfilment of the Cowdray Curse. A full conducted tour will be given. The House was painted by Turner and Constable in the 19<sup>th</sup> century and was mentioned in William Cobbett's "Rural Rides" in 1830.

Lunch will be at the 16<sup>th</sup> century Wheatsheaf Inn in the centre of Midhurst. After lunch **Michael Robins** will give a conducted tour of the town. Midhurst has over 100 listed buildings. It developed into a market town from a Motte and Bailey Castle and is full of Medieval, Georgian and Victorian buildings.

Our tour guide **Michael Robins** (01273 773052) will accompany the outing.

To **MARTIN FOSTER**, 11, Victoria Street, Brighton, Sussex BN1 3FP (01273 729998) by no latter than **Wednesday 24th June**. Please make cheques payable to M and M Historic Tours. Costs include Coach and Entrance fees. HHA Historic Houses Association.

No	Non HHA Mems £25.75	No	HHA Mems £21.5
----	------------------------	----	-------------------



The Regency Society

**TOTAL INC** £.....

**Name**..... **Tel No**.....

**Address**.....

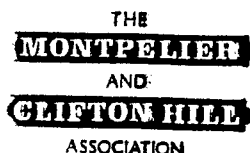
**Pick up point** (Please Tick):- Brampton Road 8.15AM( ) Sussex Square Gdns 9.00AM( )  
 Powis Square 9.15AM ( ) Hove Town Hall 9.30AM ( )

**Pub lunch required** Yes( ) No( )

**Name of Member's Society**.....

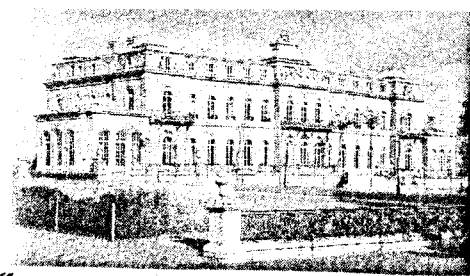
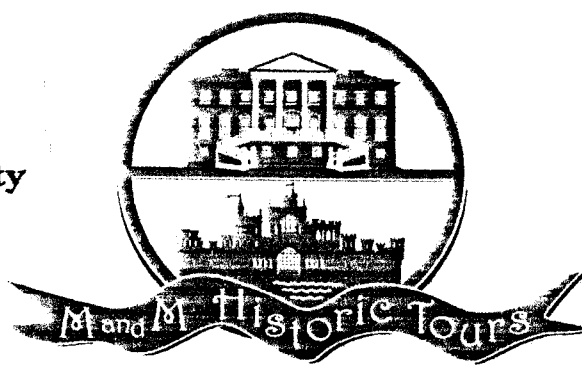
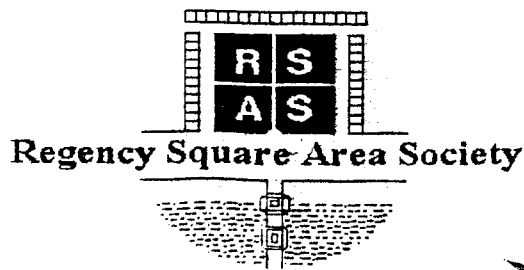


Regency Square Area Society



Conserving this historic area





**LATE SUMMER OUTING SUNDAY 23<sup>RD</sup> AUGUST 2009**  
**WREST PARK AND THE DE GREY MAUSOLEUM**

After leaving Brighton we will travel to the village of Silsoe in Bedfordshire where we have lunch at the Star and Garter, a 16<sup>th</sup> century Inn.

After lunch we will visit Wrest Park, owned by English Heritage. The site was the home of the De Grey family since the 13<sup>th</sup> century until 1917. The gardens are celebrated for their rare survival of a formal early 18<sup>th</sup> century layout of wooded walks and canals, centred on the architectural highlight of the pavilion designed by Thomas Archer in 1710. Subsequent generations added garden buildings such as the Bath House and the Chinese Pavilion, valuing the special atmosphere of the established gardens even when more fashionable landscapers would have swept it away. Lancelot "Capability" Brown was employed to enhance the gardens doing little more than nibbling at the edges of the earlier 18<sup>th</sup> century landscape.

The old manor house was demolished when the present house was completed by 1834. This was designed by Thomas Earl de Grey, an enthusiast for 18<sup>th</sup> century French architecture. It is set further north than the site of the old house, and new formal gardens were laid out between the mansion and the woodland garden. The Orangery, Italian garden and Parterre with magnificent lead statues date from the 19<sup>th</sup> century. The house is one of only 3 in this country modelled after the design of a French Chateau. The style of the gardens was inspired from those at Versailles and the Loire Valley.

The house is now used as an agricultural college and hopefully we will be able to see the interior with its splendid painted ceilings and other architectural features and paintings. This will be subject to weather the house was in use for a corporate function the day before. The tour of the gardens is by a self-guided audiotape.

After seeing Wrest Park we will go to see the De Grey Mausoleum in the nearby village of Flitton, which is among the largest sepulchral chapels attached to any English church. This cruciform mausoleum houses a remarkable sequence of 17 sculpted and effigied monuments, spanning nearly 3 centuries (1615-1899), to the De Grey family from the Park.

Our tour guide **Michael Robins** (01273 773052) will accompany the outing.

To **MARTIN FOSTER**, 11, Victoria Street, Brighton, Sussex BN1 3FP (01273 729998) by no later than **Friday 7th August**. Please make cheques payable to M and M Historic Tours. Costs include Coach and Entrance fees. EH English Heritage

No	Non EH Mems(Adults)	No	Non EH Mems(Sen Cits)	No	EH Mems
	£30.2		£29.4		£25.0
<b>TOTAL INC</b>		<b>£.....</b>			

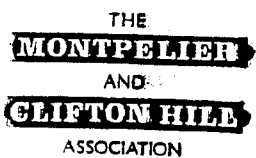
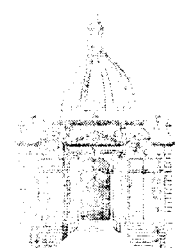
**Name**..... **Tel No**.....

**Address**.....

**Pick up point (Please Tick):** - Brampton Road 8.00AM( ) Sussex Square Gdns 8.45AM( )  
 Powis Square 9.00AM( ) Hove Town Hall 9.15AM( )

**Pub lunch required** Yes( ) No( )

**Name of Member's Society**.....



Conserving this historic area

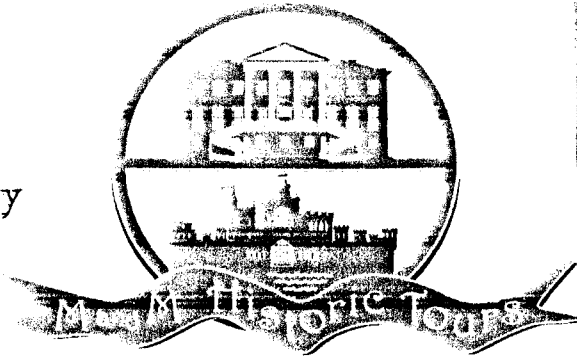


The Regency Society





The Regency Society



**AUTUMN OUTING SUNDAY 4<sup>th</sup> OCTOBER 2009**  
**DORNEY COURT AND ETON COLLEGE**

After leaving Brighton we will travel to see Dorney Court in Berkshire not far from the heart of Windsor. Dorney is one of the finest Tudor Manor Houses in England. It is Grade I listed and has been occupied and still is by the Palmer family for the past 450 years. The house boasts a magnificent Great Hall, oak and lacquer furniture, needlework and panelled rooms as well as a ghost. The adjacent 13<sup>th</sup> century Church of St James, with Norman font and Tudor tower can also be visited. It has also a magnificent monument to the Palmer family.

We will then have lunch at the nearby Palmer Arms and afterwards we will visit Eton College founded in 1440 by Henry VI. It is one of the oldest and best know schools in the country and is one of the most important heritage sites in England. You will visit and share the beauty of the ancient precinct, which includes the magnificent College Chapel, a masterpiece of the perpendicular style.

At both sites the staff of the Manor House and the College will give a full conducted tour. Our tour guide **Michael Robins** (01273 773052) will accompany the outing

To **MARTIN FOSTER**, 11, Victoria Street, Brighton, Sussex BN1 3FP (01273 729998) by no latter than **Friday 18th September**. Please make cheques payable to M and M Historic Tours. Costs include Coach and Entrance fees.

No	ADULTS AND SENIOR CITIS.
	£36
TOTAL INC.	£.....



**Name**.....**Tel No**.....

**Address**.....

.....

**Pick up point (Please Tick):** - Brampton Road 8.15AM( ) Sussex Square Gdns 9.00AM( )  
Powis Square 9.15AM( ) Hove Town Hall 9.30AM( )

**Pub lunch required** Yes( ) No( )

**Name of Member's Society**.....

