

**THE  
MONTPELIER  
AND  
CLIFTON HILL  
ASSOCIATION**



**CHASTLETON HOUSE AND RYCOTE CHAPEL**

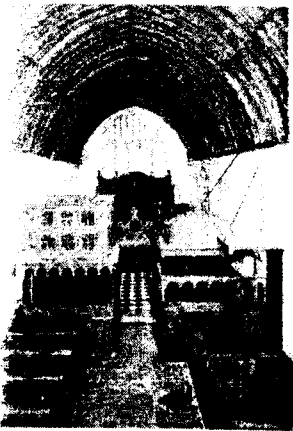
**Spring Outing Saturday 26<sup>th</sup> April**

The party will leave Brampton Road at 8.00am and Powis Square at 8.45am and will travel to Little Compton for lunch at the Red Lion in a part one of Oxfordshire's most picturesque countryside on the edge of the Cotswolds. After lunch we will visit Chastleton House, owned by the National Trust and is one of England's finest and most complete Jacobean houses. It is filled not only with a mixture of rare and everyday objects, furniture and textiles collected since its completion in 1612, but also with the atmosphere of 400 years of continuous occupation by one family. It is wellknown for its wooden panelling and famous plastered long gallery. The gardens have a typical Elizabethan and Jacobean layout, with a ring of fascinating topiary at their heart, and it was here in 1865 that the rules of modern croquet were codified. Since the Trust acquired the property they have concentrated on conserving it rather than restoring it to a pristine state.

On the way back to Brighton the party will visit Rycote Chapel which is owned by English Heritage. It was consecrated in 1449 and it is the fine 17<sup>th</sup> century fittings - the western minstrel's gallery, two large canopied box pews, the triple-decker pulpit and the reredos- that makes the chapel of outstanding interest. It has painted panelling and is often referred to as the sister chapel to St Mary's church at Langney with the Kederminster Library and Pew.

**To MARTIN FOSTER, 11 Victoria Street, Brighton Sussex BN1 3FP by no latter than Thursday 17<sup>th</sup> April 2008. (Tel. No. 01273 729998)**

NB Because of restrictions on the surrounding roads the coach is only allowed to be a maximum size for 25 people and therefor places will be allocated to the first 25 people who apply. Costs include the coach and entrance fees. Mike Robins, our tour guide will be with us.



No	NT & EH MEMS	No	NON NT & NON EH MEMS	No	NT MEMS & NON EH MEMS	No	EH MEMS & NON NT MEMS
	£21.55		£30.30		£23.30		£28.55
NT	National Trust			EH	English Heritage		

**TOTAL ENCLOSED** £.....



**THE  
MONTPELIER  
AND  
CLIFTON HILL  
ASSOCIATION**



CLARENCE HOUSE

**CARTOON MUSEUM AND CLARENCE HOUSE  
Late Summer Outing Saturday 30<sup>th</sup> August**

The party will leave Brampton Road at 8.15am and Powis Square at 9.00a.m and will travel to London to visit the Cartoon Museum in Little Russell Street near the British Museum. This museum is dedicated to preserving the best of British cartoons, caricatures, comics and animations. This will especially appeal to those Members who attended Lord Baker's talk at last year's AGM. He is one of the founders of this new and interesting museum.

Lunch will be available in any of the many surrounding restaurants and pubs. The choice will be yours. After lunch we will see Clarence House in St James's Palace. This is the official home of Prince Charles, HRH The Prince of Wales and his two sons and was the London home of Her Majesty Queen Elizabeth, the Queen Mother. It was originally built by John Nash in the early 19<sup>th</sup> century for William IV. Visitors are given a guided tour of the five rooms on the ground floor.

For further details please contact MARTIN FOSTER on 01273 729998. Please note that we are going on a Saturday and not the usual day of a Sunday and also the booking forms have to be in by one month before we depart. This is due to the fact we have to book and pay for the tickets in that far advance. It will be regretted that booking forms received after that date cannot be accepted due to this restriction. Our tour guide **MICHAEL ROBINS** will be accompanying us on the trip. This is a good opportunity to see one of the royal residences recently opened to the public for the first time.

-----  
**TO MARTIN FOSTER, 11 VICTORIA STREET, BRIGHTON, SUSSEX,  
 BN1 3FP BY NO LATER THAN THURSDAY 31st JULY.**

**Costs include the Coach and Entrance fees.**

.....ADULTS @ £29.4 .....

.....SEN CITS @ £28 .4.....

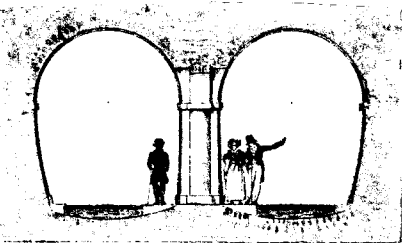
**TOTAL ENCLOSED** .....

**NAME**.....**ADDRESS**.....

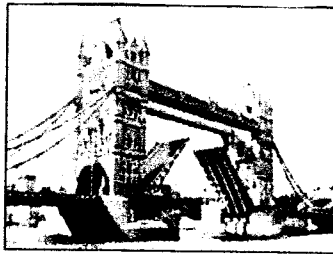
.....**TEL NO**.....

**PICK UP POINT**      **POWIS SQUARE/ BRAMPTON ROAD**





**THE  
MONTPELIER  
AND  
CLIFTON HILL  
ASSOCIATION**



**"CROSSING THE RIVER THAMES"**

**Autumn Outing Sunday 5<sup>th</sup> October**

**Bunels' Tunnel, Tower Bridge and Fosters "Wobbly" Bridge**

The party will leave Brampton Road at 8.15am and Powis Square at 9.00a.m and will travel to Rotherhithe, London to visit the Heritage Centre for the Brunels' Tunnel. We will have a conducted tour of the Conservation Area as well as seeing the Brunel Museum. The area is a World Heritage site and the Tunnel is now part of the East London Underground line. It was the first tunnel, constructed by Marc Brunel to be built in the World under a major river. We will be shown why it was constructed and how by the technique developed by Marc Brunel, which in principal is still used today. Many difficulties were encountered during its construction including the near death of his son, the word famous engineer Isambard Kingdom Brunel.

Lunch will be taken at the Mayflower, which was named after the site where the Mayflower left London for the New World and is one of London's most famous Inns.

After lunch we will visit Tower Bridge where we will have a conducted tour of the bridge, seeing how it was constructed and how the bridge operates. After seeing Tower Bridge we will walk along the South Bank to London Bridge. Near the present bridge we will be given a talk by Michael Robins about the past at least 6 bridges that were constructed and was the only crossing for the Thames in London until the middle of the 18<sup>th</sup> century. Finally we will take a walk across Fosters Millennium "Wobbly" Bridge before leaving for home from the Tate Modern.

For further details please ring MARTIN FOSTER on 01273 729998. Our tour guide MICHAEL ROBINS will be accompanying us on the trip.

-----  
**TO MARTIN FOSTER, 11 VICTORIA STREET, BRIGHTON, SUSSEX,  
 BN1 3FP BY NO LATER THAN FRIDAY 26th SEPTEMBER**

.....**ADULTS @ £32.30**.....

.....**SENIOR CITIZENS @ £30.8**.....**TOTAL £**.....

**(Costs include the Coach and Entrance fees.)**

**NAME**.....

**ADDRESS**.....

.....

**TEL. No**.....

**(Pick Up Point Brampton Road/Powis Square)**